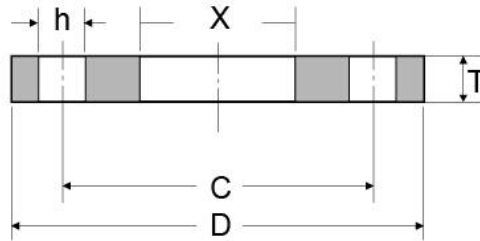


## Plate Flange, DIN 2576, 10 Inch, S235JR



Rated Diameter	Pipe	Flange				Screws			Weight/KG Flange
		X	C	D	T	h	Thread	Bolt holes	
200	219,1	221,5	295	340	24	22	M20	8	9,244
250	273,0	276,5	350	395	26	22	M20	12	11,788
300	323,9	327,5	400	445	26	22	M20	12	13,578
350	355,6	359,5	460	505	30	22	M20	16	21,766
400	406,4	411,0	515	565	32	26	M24	16	27,436
450	457,2	462,0	565	615	36	26	M24	20	33,470
500	508,0	513,5	620	670	38	26	M24	20	40,103
600	610,0	616,5	725	780	42	30	M27	20	54,297
700	711,0	714,2	840	895	50	30	M27	24	82,777
800	813,0	815,8	950	1015	56	33	M30	24	116,534
900	914,0	917,4	1050	1115	62	33	M30	28	141,425
1000	1016,0	1019,0	1160	1230	70	36	M33	28	188,561
1200	1219,0	1224,0	1380	1455	83	39	M36	32	290,884

Source: <http://www.landeeflange.com>

Landeeflange.com has won fully trust from clients by providing the best flanges. Our service mission is to achieve 100% customer satisfaction.