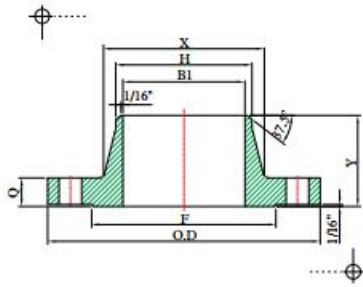


A182 F51 WN Flange, 2IN, CL1500, RF, ANSI B16.5



NOM.	FLANG E	THICK NESS (Q)	HUB DIA. (X)	RAISE D (F)	HUB DIA. AT WELDI NG POINT (H)	BORE DIAMETER (B) (B1)	DEPTH	LENGTH THROUGH HUB (Y)		
								WELDING NECK AND SOCKET WELD (2)	OF SOCKET (D)	SLIP-O N SOCKE T WELD AND THREA DED
1/2	3.50	0.44	1.19	1.38	0.84	0.62	0.38	1.88	0.62	0.62
3/4	3.88	0.50	1.50	1.69	1.05	0.82	0.44	2.06	0.62	0.62
1	4.25	0.56	1.94	2.00	1.32	1.05	0.50	2.19	0.69	0.69
1 1/4	4.62	0.62	2.31	2.50	1.66	1.38	0.56	2.25	0.81	0.81
1 1/2	5.00	0.69	2.56	2.88	1.90	1.61	0.62	2.44	0.88	0.88
2	6.00	0.75	3.06	3.62	2.38	2.07	0.69	2.50	1.00	1.00
2 1/2	7.00	0.88	3.56	4.12	2.88	2.47	0.75	2.75	1.12	1.12
3	7.50	0.94	4.25	5.00	3.50	3.07	0.81	2.75	1.19	1.19
3 1/2	8.50	0.94	4.81	5.50	4.00	3.55	0.88	2.81	1.25	1.25
4	9.00	0.94	5.31	6.19	4.50	4.03	0.94	3.00	1.31	1.31
5	10.00	0.94	6.44	7.31	5.56	5.05	0.94	3.50	1.44	1.44
6	11.00	1.00	7.56	8.50	6.63	6.07	1.06	3.50	1.56	1.56
8	13.50	1.12	9.69	10.62	8.63	7.98	1.25	4.00	1.75	1.75
10	16.00	1.19	12.00	12.75	10.75	10.02	1.31	4.00	1.94	1.94
12	19.00	1.25	14.38	15.00	12.75	12.00	1.56	4.50	2.19	2.19
14	21.00	1.38	15.75	16.25	14.00	13.25	1.63	5.00	2.25	3.12
16	23.50	1.14	18.00	18.50	16.00	15.25	1.75	5.00	2.50	3.44

18	25.00	1.56	19.88	21.00	18.00	17.25	1.94	5.50	2.69	3.81
20	27.50	1.69	22.00	23.00	20.00	19.25	2.12	5.69	2.88	4.06
24	32.00	1.88	26.12	27.25	24.00	23.25	2.50	6.00	3.25	4.38

Source: <http://www.landeeflange.com>

Landeeflange.com has won fully trust from clients by providing the best flanges.

Our service mission is to achieve 100% customer satisfaction.